

JUMO GmbH & Co. KG

Delivery address: Mackenrodtstraße 14
36039 Fulda, Germany
Postal address: 36035 Fulda, Germany
Phone: +49 661 6003-0
Fax: +49 661 6003-607
E-mail: mail@jumo.net
Internet: www.jumo.net

JUMO Instrument Co. Ltd.

JUMO House
Temple Bank, Riverway
Harlow, Essex CM20 2DY, UK
Phone: +44 1279 635533
Fax: +44 1279 635262
E-mail: sales@jumo.co.uk
Internet: www.jumo.co.uk

JUMO Process Control, Inc.

6733 Myers Road
East Syracuse, NY 13057, USA
Phone: 315-437-5866
1-800-554-5866
Fax: 315-437-5860
E-mail: info.us@jumo.net
Internet: www.jumousa.com



JUMO tecLine CR-GT

Conductive 2-Electrode Conductivity Sensor Industrial Version with graphite electrodes

Series 202925 (former 2 EL6... Series)

- 2-electrode system
- cell constant $K = 1.0, 3.0$ or 10.0
- for ranges up to 200 mS/cm
- different process connections enable optimal adaption to process conditions

Brief description

Conductivity sensors are used in conjunction with conductivity transmitters to determine the electrolytic conductivity of liquids.

JUMO 202925 Series conductivity sensors can be employed in areas such as:

- $K = 1.0/3.0$
media separation, drinking water purification, wastewater checks/treatment
- $K = 10.0$
wastewater checks/treatment, concentrate monitoring, domestic water treatment

The versions $K = 3.0$ and $K = 10.0$ are discontinued types and are only recommended for existing plants that need spare-parts.

When conductivity measurements are required in ranges above 10 mS/cm , we recommend use of the state-of-the-art 4-pole measuring technique or inductive conductivity measurement technology.

Principle of operation

202925 Series conductivity cells are 2-electrode conductivity sensors. An a.c. voltage is applied through the transmitter. The current flowing through the liquid and the electrodes is determined by the conductivity of the liquid.



JUMO GmbH & Co. KG

Delivery address: Mackenrodtstraße 14
36039 Fulda, Germany
Postal address: 36035 Fulda, Germany
Phone: +49 661 6003-0
Fax: +49 661 6003-607
E-mail: mail@jumo.net
Internet: www.jumo.net

JUMO Instrument Co. Ltd.

JUMO House
Temple Bank, Riverway
Harlow, Essex CM20 2DY, UK
Phone: +44 1279 635533
Fax: +44 1279 635262
E-mail: sales@jumo.co.uk
Internet: www.jumo.co.uk

JUMO Process Control, Inc.

6733 Myers Road
East Syracuse, NY 13057, USA
Phone: 315-437-5866
1-800-554-5866
Fax: 315-437-5860
E-mail: info.us@jumo.net
Internet: www.jumousa.com



Technical data

Cell constant ^a	K = 1.0 or K = 3.0 or K = 10.0
Typical measuring ranges ^b	10 µS/cm – 15 mS/cm (for K = 1.0) 0,1 – 30 mS/cm or 200 mS/cm (for K = 3.0 or 10.0)
Temperature compensation	with Pt100 or Pt1000
Process connection	standard: G 3/4A optional: G 1A oder NPT3/4-14 or taper connection DIN 11851 - DN 25 (milk cone)
Body material	PVDF for K = 1.0 and K = 3.0 PP for K = 10.0
Cell material	graphite/PES
Maximaler pressure	Cell constant K = 1.0: 16 bar at 25 °C or 9 bar at 60 °C; at 130 °C max. 1 bar Cell constant K = 3.0: 8 bar at 25 °C or 1 bar at 130 °C Cell constant K = 10.0: 6 bar at 25 °C or 1 bar at 80 °C
Maximale temperature	PVDF 130 °C PP 80 °C
Electrical connection	angled connector (Hirschmann connector) to DIN 43650, protected to IP65, 10 m fixed cable 10 m, other cable lengths on request

^a Depending on the production conditions, the cell constant can deviate by ±10 % from the nominal value. This deviation can be compensated at the transmitter.

^b The measuring ranges also depend on the transmitter used.

When used for wider ranges than the typical ones, measurement errors caused by polarization may occur.

JUMO GmbH & Co. KG
 Delivery address: Mackenrodtstraße 14
 36039 Fulda, Germany
 Postal address: 36035 Fulda, Germany
 Phone: +49 661 6003-0
 Fax: +49 661 6003-607
 E-mail: mail@jumo.net
 Internet: www.jumo.net

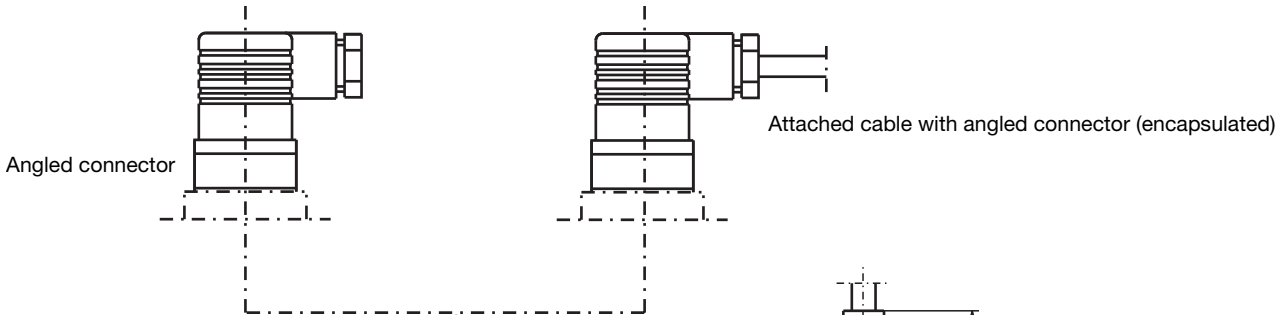
JUMO Instrument Co. Ltd.
 JUMO House
 Temple Bank, Riverway
 Harlow, Essex CM20 2DY, UK
 Phone: +44 1279 635533
 Fax: +44 1279 635262
 E-mail: sales@jumo.co.uk
 Internet: www.jumo.co.uk

JUMO Process Control, Inc.
 6733 Myers Road
 East Syracuse, NY 13057, USA
 Phone: 315-437-5866
 1-800-554-5866
 Fax: 315-437-5860
 E-mail: info.us@jumo.net
 Internet: www.jumousa.com

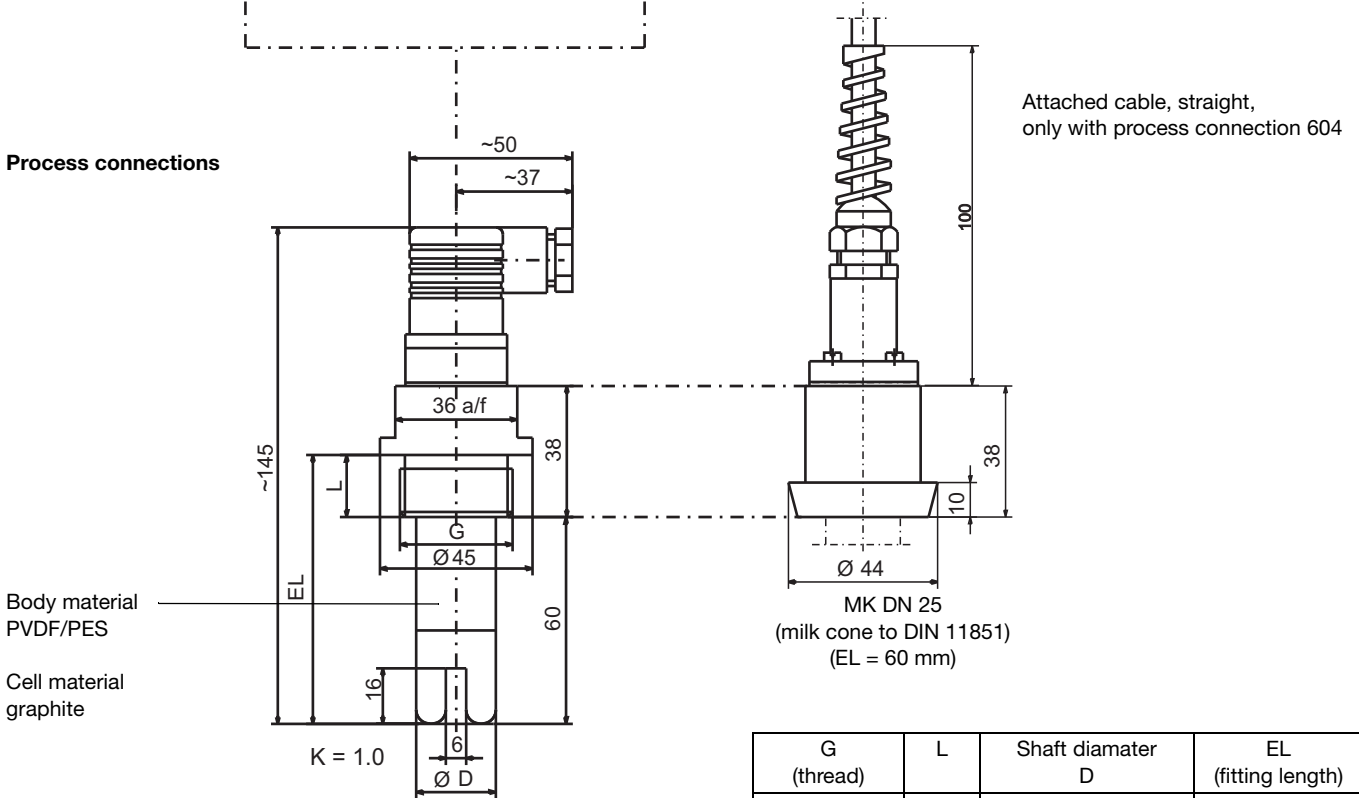


Dimensions/overview of types

Electrical connections

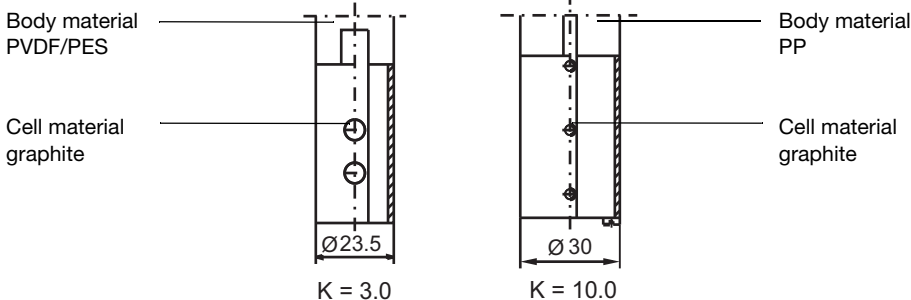


Process connections



G (thread)	L	Shaft diameter D	EL (fitting length)
NPT3/4-14	20	23.5	80
G 1A ^a	18		78
G 3/4A	16		76

^a with K = 10.0 shaft diameter is 30 mm



JUMO GmbH & Co. KG

Delivery address: Mackenrodtstraße 14
36039 Fulda, Germany
Postal address: 36035 Fulda, Germany
Phone: +49 661 6003-0
Fax: +49 661 6003-607
E-mail: mail@jumo.net
Internet: www.jumo.net

JUMO Instrument Co. Ltd.

JUMO House
Temple Bank, Riverway
Harlow, Essex CM20 2DY, UK
Phone: +44 1279 635533
Fax: +44 1279 635262
E-mail: sales@jumo.co.uk
Internet: www.jumo.co.uk

JUMO Process Control, Inc.

6733 Myers Road
East Syracuse, NY 13057, USA
Phone: 315-437-5866
1-800-554-5866
Fax: 315-437-5860
E-mail: info.us@jumo.net
Internet: www.jumousa.com

**Stock items**

Type	Brief description	Part no.
202925/0100-1003-105-37-88-84	K = 1.0/Pt100/G 3/4A	00300200
202925/0100-0000-105-37-88-84	K = 1.0/G 3/4A	00300201
202925/0100-1003-106-37-88-84	K = 1.0/Pt100/G 1A	00089385
202925/1000-1003-106-37-87-84	K = 10.0/Pt100/G 1A	00305206

Non-stock-items

Type	Brief description	Part no.
202925/0300-1003-105-37-88-84	K = 3.0/Pt100/G 3/4A	00089381