

**JUMO GmbH & Co. KG**  
Delivery address: Mackenrodtstraße 14  
36039 Fulda, Germany  
Postal address: 36035 Fulda, Germany  
Phone: +49 661 6003-0  
Fax: +49 661 6003-607  
E-mail: mail@jumo.net  
Internet: www.jumo.net

**JUMO Instrument Co. Ltd.**  
JUMO House  
Temple Bank, Riverway  
Harlow, Essex CM20 2DY, UK  
Phone: +44 1279 635533  
Fax: +44 1279 635262  
E-mail: sales@jumo.co.uk  
Internet: www.jumo.co.uk

**JUMO Process Control, Inc.**  
6733 Myers Road  
East Syracuse, NY 13057, USA  
Phone: 315-437-5866  
1-800-554-5866  
Fax: 315-437-5860  
E-mail: info.us@jumo.net  
Internet: www.jumousa.com



# Lines, plugs and sockets for pH, redox, conductivity and temperature sensors

## Brief description

The use of electrochemical sensors for liquid analysis requires special connection lines and connectors. JUMO offers a selection of tried and tested versions for this application. They are available either as a finished preassembled connection line, as loose material by the roll or as individual plugs/sockets for self-assembly.

### As a general rule:

The measuring lead selected between an electrochemical sensor and the transmitter/indicator/controller should be as short as possible. Typical line lengths in this case are 5 to 10 m with high functional reliability. If longer line lengths must be selected in some cases, the technical documentation of the sensors and measuring instruments must be observed. The line between the sensor and evaluation instrument must be laid directly and without interruption (for example terminal strips) or cable extensions.

### pH and redox measurement

Specially designed coaxial lines are used for pH and redox measurements. In these measurements direct voltages of a lower level are generated by the sensor and transferred to the evaluation instrument. These measurements, some of which are high-resistive measurements (potentiostatic measurement principle, internal resistors up to several gigaohms) are sensitive to electrical faults and radiation. Even a movement of the line can falsify measurement values in unfavorable conditions. An additional layer of insulation in JUMO coaxial line increases the insulation resistance of the line, thereby ensuring a reliable connection from the sensor to the transmitter. Other coaxial lines of the type used for antennas and computers are not suitable and could damage the sensors. This could also result in immediate failure of the sensor or reduced service life. For multiple sensors, for example with integrated temperature sensors, coax lines with individual core wires are available (Variopin, etc.).

### Conductive conductivity measurement

Connecting cables for conductive conductivity probes as per data sheets 202922 to 202930 are also specially optimized and selected for the application. Alternating voltages of low amplitude in the range of a few Hertz to several Kilohertz are transferred. Accordingly these measuring leads are normally equipped with shielding. The shielding itself must be designed according to applicable technical rules and the relevant application. The individual core wires must be twisted for increased "twisted pair" signal reliability.



Type 202990/xx-xx-xx-11  
Ferrules



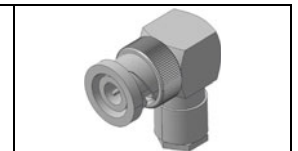
Type 202990/xx-xx-xx-04  
N connector



Type 202990/xx-xx-xx-13  
Shield-Kon® connector



Type 202990/xx-xx-xx-22  
BNC connector, straight



Type 202990/xx-xx-xx-23  
BNC connector, angled



Type 202990/xx-xx-xx-90  
N line socket

Type 202990/11-95-xx-xx-xx  
with VP line socket

## Key features

- High-quality preassembled connection lines
- Highest possible protection type with factory assembly
- Wide range of connectors/sockets and special selection
- Customer-specific versions on request



**JUMO GmbH & Co. KG**  
 Delivery address: Mackenrodtstraße 14  
 36039 Fulda, Germany  
 Postal address: 36035 Fulda, Germany  
 Phone: +49 661 6003-0  
 Fax: +49 661 6003-607  
 E-mail: mail@jumo.net  
 Internet: www.jumo.net

**JUMO Instrument Co. Ltd.**  
 JUMO House  
 Temple Bank, Riverway  
 Harlow, Essex CM20 2DY, UK  
 Phone: +44 1279 635533  
 Fax: +44 1279 635262  
 E-mail: sales@jumo.co.uk  
 Internet: www.jumo.co.uk

**JUMO Process Control, Inc.**  
 6733 Myers Road  
 East Syracuse, NY 13057, USA  
 Phone: 315-437-5866  
 1-800-554-5866  
 Fax: 315-437-5860  
 E-mail: info.us@jumo.net  
 Internet: www.jumousa.com



**Stock versions** (delivery 3 days after receipt of order)

**Preassembled lines**

**Coaxial lines, Ø 5 mm for pH and redox electrodes, compensation thermometer and glass conductivity cells**

Line end 1 (sensor side)	Type of line	Type	Old type	Line end 2 (device side)	Part no.
92 N-line socket, rotating	02 Low-noise coaxial line, temperature: -25 to +75, PVC, black Length 3 m: Length 5 m: Length 10 m: Length 25 m: Length 50 m:	202990/02-92-3-00 202990/02-92-5-00 202990/02-92-10-00 202990/02-92-25-00 202990/02-92-50-00	2992-2(3)-0 2992-2(5)-0 2992-2(10)-0 2992-2(25)-0 2992-2(50)-0	0 Without plug, without socket	00082672 00082673 00082659 00082660 00303525

**Coaxial lines, Ø 5 mm for pH and redox electrodes, compensation thermometer and glass conductivity cells**

Line end 1 (sensor side)	Type of line	Type	Old type	Line end 2 (device side)	Part no.
92 N line socket, rotating	02 Low-noise coaxial line, temperature: -25 to +75, PVC, black Length 1 m:	202990/02-92-1-22	-	22 BNC connector, straight	00328997

**Coaxial lines, Ø 5 mm for pH and redox electrodes, compensation thermometer and glass conductivity cells**

Line end 1 (sensor side)	Leitungsart	Type	Old type	Line end 2 (device side)	Part no.
92 N line socket, rotating	02 Low-noise coaxial line, temperature: -25 to +75, PVC, black Length 1,5 m: Length 5 m: Length 10 m:	202990/02-92-1,5-13 202990/02-92-5-13 202990/02-92-10-13	- - -	13 Shield-Kon® connector	00085154 00307298 00082649

**JUMO GmbH & Co. KG**  
 Delivery address: Mackenrodtstraße 14  
 36039 Fulda, Germany  
 Postal address: 36035 Fulda, Germany  
 Phone: +49 661 6003-0  
 Fax: +49 661 6003-607  
 E-mail: mail@jumo.net  
 Internet: www.jumo.net

**JUMO Instrument Co. Ltd.**  
 JUMO House  
 Temple Bank, Riverway  
 Harlow, Essex CM20 2DY, UK  
 Phone: +44 1279 635533  
 Fax: +44 1279 635262  
 E-mail: sales@jumo.co.uk  
 Internet: www.jumo.co.uk

**JUMO Process Control, Inc.**  
 6733 Myers Road  
 East Syracuse, NY 13057, USA  
 Phone: 315-437-5866  
 1-800-554-5866  
 Fax: 315-437-5860  
 E-mail: info.us@jumo.net  
 Internet: www.jumousa.com



**Connecting cables for pH and redox electrodes and glass conductivity cells and multisensors with integrated temperature sensor; VP terminal head**

Line end 1 (sensor side)	Type of line	Type	Old type	Line end 2 (device side)	Part no.
95 VP (Variopin)-line socket, 6-pin	11 VP (Variopin) coaxial line with shield +4 stranded wire and cable shield, temperature: -30 to +70, PVC, black Length 5 m: Length 10 m:	202990/11-95-5-11 202990/11-95-10-11	- -	11 Ferrules	00372919 00373029

Contact assignment: (1) pH glas (2) pH reference (3) Pt100/1000 (3-wire) (4) free  
 (5) Pt100/1000 (6) Pt100/1000 (7) Shield

**Lines (by the roll without plugs or sockets)**

**Coaxial lines, Ø 5 mm for pH and redox measurements**

Line end 1 (sensor side)	Type of line	Type	Old type	Line end 2 (device side)	Part no.
0 Without plug, without socket	02 Low-noise coaxial line, temperature: -25 to +75, PVC, black Length 100 m:	202990/02-00-100-00	2990-2(100)-0	0 Without plug, without socket	00085976

**Connecting cables, Ø 5.7 mm for conductive conductivity probes (2-electrode system)**

Line end 1 (sensor side)	Type of line	Type	Old type	Line end 2 (device side)	Part no.
0 Without plug, without socket	09 4 stranded wire and shield temperature: -5 to +80 PVC, grey Length 25 m: Length 50 m:	202990/09-00-25-00 202990/09-00-50-00	2990-9(25)-0 2990-9(50)-0	0 Without plug, without socket	00303681 00304181

Color coding to DIN IEC 757:

BU = Blue GN = Green GN/YE = Green/Yellow GY = Grey RD = Red TR = Transparent WH = White YE = Yellow

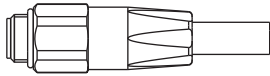

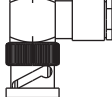
**JUMO GmbH & Co. KG**  
 Delivery address: Mackenrodtstraße 14  
 36039 Fulda, Germany  
 Postal address: 36035 Fulda, Germany  
 Phone: +49 661 6003-0  
 Fax: +49 661 6003-607  
 E-mail: mail@jumo.net  
 Internet: www.jumo.net

**JUMO Instrument Co. Ltd.**  
 JUMO House  
 Temple Bank, Riverway  
 Harlow, Essex CM20 2DY, UK  
 Phone: +44 1279 635533  
 Fax: +44 1279 635262  
 E-mail: sales@jumo.co.uk  
 Internet: www.jumo.co.uk

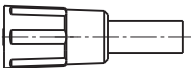
**JUMO Process Control, Inc.**  
 6733 Myers Road  
 East Syracuse, NY 13057, USA  
 Phone: 315-437-5866  
 1-800-554-5866  
 Fax: 315-437-5860  
 E-mail: info.us@jumo.net  
 Internet: www.jumousa.com



**Plugs<sup>1</sup> (for self-assembly on coaxial line)**

Designation/illustration	Type	Old type	for line type	Part no.
N connector for line diameter Ø 5 mm: 	202990/00-00-000-04	2990-00-4	02	00061202
BNC connector, straight for line diameter Ø 5 mm: 	202990/00-00-000-22	2990-00-22	02	00068842
BNC connector, angled for line diameter Ø 5 mm: 	202990/00-00-000-23	2990-00-23	02	00064222

**Sockets<sup>1</sup> (for self-assembly on coaxial line)**

Designation/illustration	Type	Old type	for line type	Part no.
N line socket for line diameter Ø 5 mm: 	202990/00-00-000-90	2991-00-0	02	00057350

<sup>1</sup> Minimum order quantity: Plugs and sockets, 5 pieces per type, deviating and preassembled line 10 pieces per type